

# Access to Finance: Social enterprises

**ACCESS TO FINANCE (A2F) IS A SUBSIDISED PROGRAMME – SET UP BY THE LONDON DEVELOPMENT AGENCY – WHICH CONTRIBUTES TO THE PROVISION OF CONSULTANCY SUPPORT IN ORDER FOR BUSINESSES ACROSS THE CAPITAL TO RAISE FINANCE.**

**EASTSIDE IS A DELIVERY PARTNER OF THE PROGRAMME FOR THE SECOND YEAR RUNNING.**

In 2006-2007, Eastside helped 21 organisations raise £2.4 million. Below is a selection of social enterprises which eastside have helped through the A2F Programme and consequently raise finance.



**TAFF**

[www.taffuk.net](http://www.taffuk.net)

The African Families Foundation (TAFF) is a charity that operates as a network of community-based organisations that provide frontline services for African families in the UK and Africa.

Eastside began work with TAFF in 2005, compiling a healthcheck made possible through a Charities Aid Foundation subsidy. Following on from this, Eastside worked with TAFF through the Access to Finance programme on:

- » Researching applicable grants
- » Applying for grants
- » Generating **£10,000** of new finance



**OXFORD HOUSE**

[www.oxfordhouse.org.uk](http://www.oxfordhouse.org.uk)

Oxford House is a community centre in Bethnal Green established in 1884 involved in a variety of youth, immigration, arts and community

work. It approached Eastside in 2006 who had helped an affiliate, Weavers Playground, previously raise finance.

Through the Access to Finance programme, Eastside:

- » Provided an oversight of the enterprise's business plan and financial model
- » Drew up plans for a new bike recycling social enterprise
- » Put together a series of grant applications

Eastside also completed an appraisal of the project itself, offering Oxford House an insight into the sector, before approaching City Bridge Trust on its behalf. Eastside was able to secure a **£53,000 grant** for the project to be put towards the associated salary cost of employing a full time manager for the project.

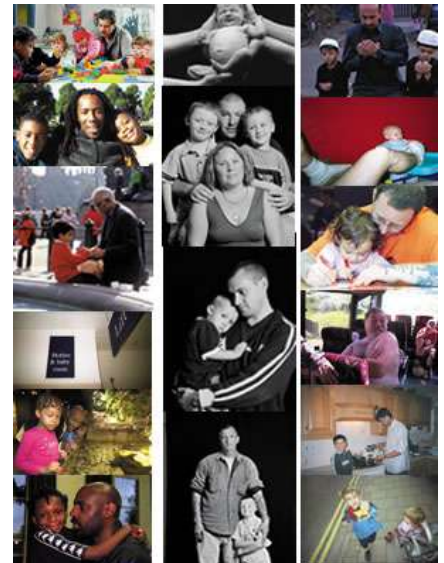
## DAD MAGAZINE

[www.fathersdirect.com](http://www.fathersdirect.com)

Fathers Direct is a charity devoted to fatherhood. It is the UK's principle information centre for fathers, and aims to fill the gaping void in the sector for paternal-support services.

About four years ago, the managers within Fathers Direct had a vision to create a magazine for new fathers as a social enterprise that would ultimately function independently from the charity.

Fathers Direct approached Eastside in 2004 in order to complete a feasibility study and to



analyse the fundraising potential of the venture. Through the Access to Finance programme, Eastside helped raise **£120,000** by:

- » Undertaking significant work on the business plan
- » Recommending and sourced the recruitment of an entrepreneurial non-executive
- » Setting up a working board independent of the charity
- » Advising on setting up a company limited by shares



**CONTACT US:**